

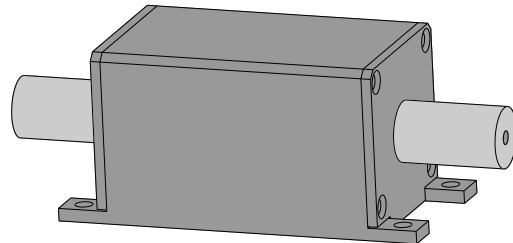
1040~1080nm High Power In-line Isolator

Description

The high power isolator series includes in-line type, beam expanded isolator, fiber in and free space out isolator and free space isolator etc., They're characterized with low insertion loss, high isolation, high power handling, high return loss, excellent environmental stability and reliability. They are ideal for fiber laser and instrumentation applications.

Key Features

- * High isolation and low insertion loss
- * PM and Non-PM are available
- * Excellent environmental stability and reliability
- * Fiber can be customized



Applications

- * Fiber Laser
- * Fiber Sensor

Specifications

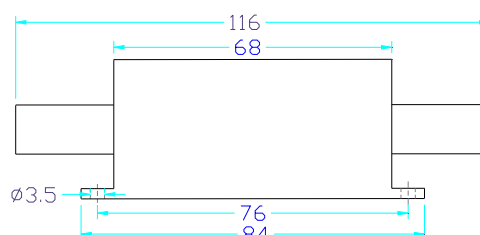
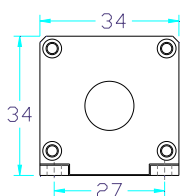
Parameter	Type	High power in-line isolator, HP(M)IIT	
		Non-PM isolator	PM isolator
Operating wavelength(nm)		1040~1080	
Bandwidth(nm)		± 5	
Typical peak isolation (dB)		≥35	
Isolation in band at 23℃(dB)		≥28	
Insertion loss at 23℃(dB)		≤1.2	
Polarization dependent loss (dB)		≤0.2	/
Extinction ratio (dB)		/	≥18 (Type B) , ≥20 (Type F)
Return loss (dB)		≥45	
Fiber type (can be customized)		HI1060	SM98-PS-U25A
Input max. power handling (W)		10 (continue) 、 10k (pulse)	
Dimensions (L x W x H mm)		116 x 34 x 34	
Operating temperature(℃)		-5 ~ +50	
Storage temperature(℃)		-20 ~ +70	

* Type B: Both axis working, Type F: Fast axis blocked.

* Backward power<10% input power

*The Above specifications is without connector.

Mechanical Dimensions (Unit: mm)



Ordering Information

HP(M)IIT-XXXX-X-X-X(XX)- X -X*X*X- X

