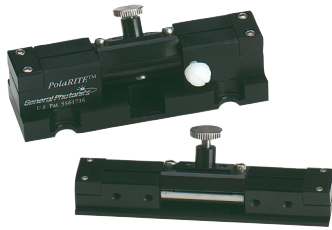


Polarization Submodules

Drop-in Polarization Controller – PolaRITE™



This is the in-line version of the PolaRITE™ polarization controller. It can be inserted into a fiber optic system to control the polarization state of light without having to disconnect any part of the system. It can be used by simply inserting a length of fiber into the slot located on top of the device. The miniature version can be inserted in even tighter spaces in a fiber optic module.

Specifications:

Intrinsic Insertion Loss	< 0.05 dB
Return Loss	> 65 dB
Operating Wavelength	480 nm, 633 nm, 780 nm, 820 nm, 980 nm, 1064 nm, 1260 to 1650 nm
Extinction Ratio	> 40 dB
Operating Temperature	-40 to 85 °C
Storage Temperature	-40 to 85 °C
Dimensions	PLC - 003: 3.00" (L) x 1.00" (W) x 1.09" (H) PLC - 006: 3.00" (L) x 0.63" (W) x 0.67" (H)

Features:

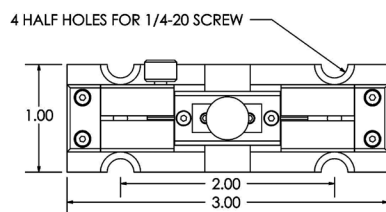
- Low Loss
- Low back reflection
- Compact
- Easy to connect
- Low cost
- Insensitive to wavelength variations
- Works with fibers of any size

Applications:

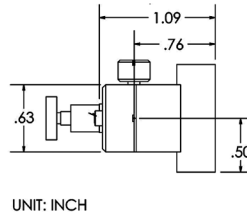
- High speed telecommunication systems
- WDM systems
- CATV systems
- Fiber laser
- Fiber sensor systems
- PM fiber systems
- Antenna remoting systems

Tech Info: pp. 95, 223
App Note: p. 210

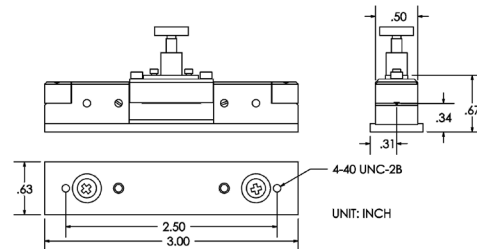
Dimensions (in inches):



PLC-003



UNIT: INCH



PLC-006

UNIT: INCH

Ordering Information:

PLC — 00 — —

3 = Lab. version S = Fiber clamp with screws 25 = 250 μm jacket
6 = Miniature version M = Fiber clamp with magnets 90 = 900 μm jacket

See page 57 for fully connectorized polarization controller, page 55 for pigtailed polarization controller

Notes:
PLC-006 has no 900 μm jacket option
Magnet clamp available only for PLC-003 for 250μm fiber