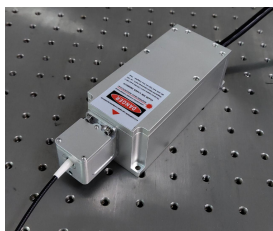




MLL-U-SM series /1~250mW



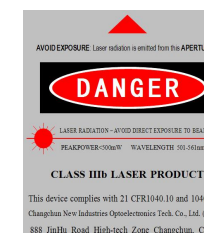
SM FIBER OUTPUT LASER

CNI has a long experience in the delivery of fiber coupled laser light sources providing high efficiency and long term stability. All laser types can be offered with appropriate fiber coupling systems. This type is specifically designed for single-mode fiber(include PM) coupling with high power stability and long term stability.



SPECIFICATIONS

Wavelength (nm)	473±1	532±1	561±1	589±1	671±1
Operating mode	CW				
Output power (mW)	>1,...,50	>1,...,200	>1,...,40	>1,...,100	>1,...,250
Power stability (rms, over 4 hours)	<2%, <3%, <5%	<1%, <3%, <5%	<3%, <5%	<2%, <3%, <5%	
Transverse mode	TEM ₀₀ (single mode fiber output)				
Fiber numerical aperture	0.10~0.15				
Polarization ratio	No polarition(>50:1 after PM fiber)				
Noise of amplitude (rms, 1Hz~20MHz)	<1%				
Fiber connector	FC				
Fiber jacket	PVC(black)				
Fiber length	1m(Other lengths can be customized)				
Warm-up time (minutes)	<10				
Operating temperature (°C)	20~35				
Power supply (90-264VAC)	PSU-H-LED/PSU-H-FDA/PSU-SR				
Modulation option	TTL on/off, 1Hz-1KHz, 1KHz-10KHz, 10KHz-30KHz; and Analog modulation option				
Expected lifetime (hours)	10000				
Warranty	1 year				



Note: The laser head needs to be used on a heat sink with good heat dissipation.

MLL-U-SM series	PSU-H-LED	PSU-H-FDA	PSU-SR
<p>176 (L) × 60 (W) × 50 (H) mm³, 1.1 kg</p>	<p>277 (L) × 145 (W) × 106 (H) mm³, 2.6 kg</p>	<p>275 (L) × 145 (W) × 104 (H) mm³, 2.3 kg</p>	<p>188(L) × 145(W) × 83(H) mm³, 1.2kg</p>